



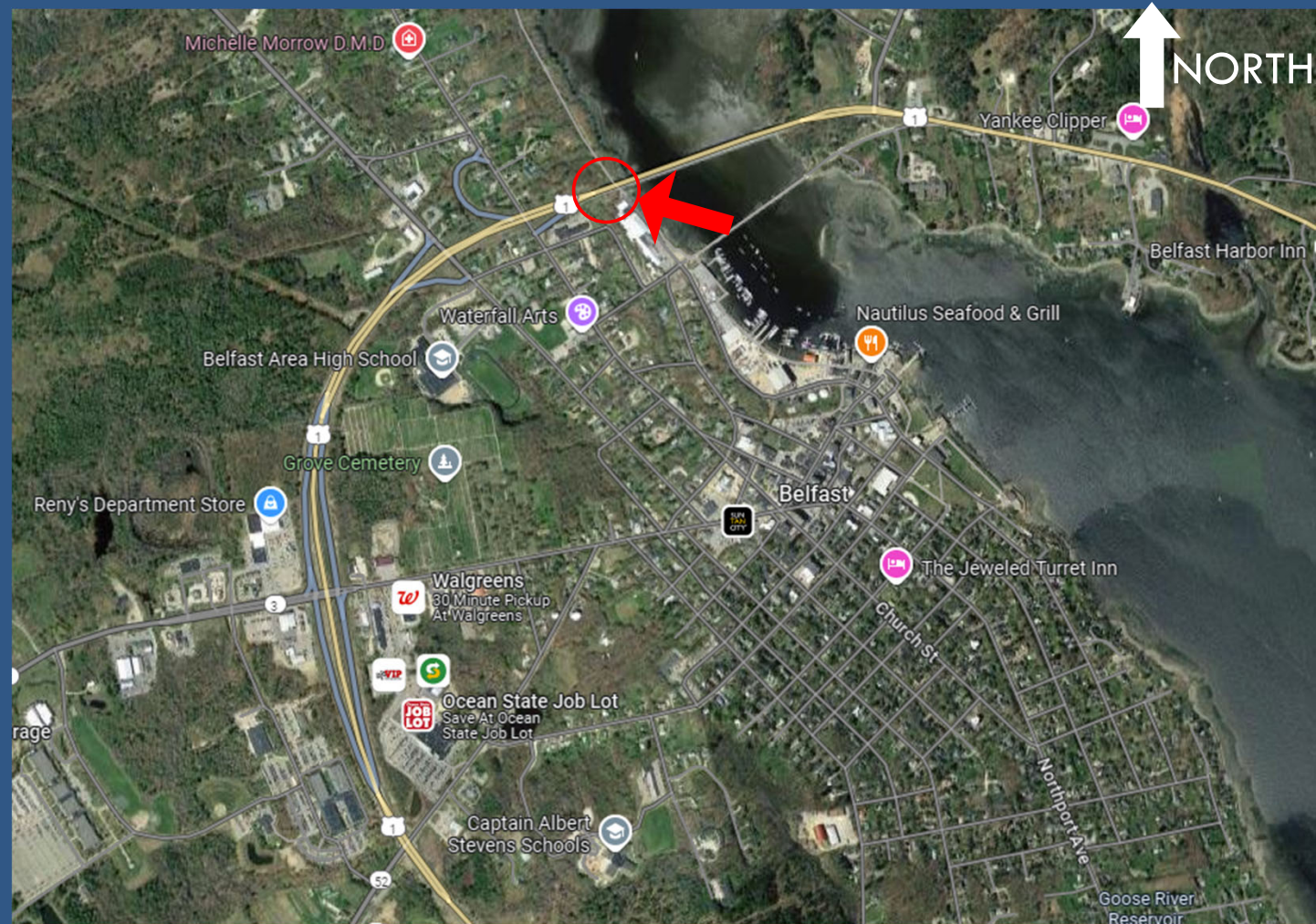
BELFAST PUBLIC PRESENTATION

VETERANS MEMORIAL BRIDGE
#5750
ROUTE 1

MaineDOT
WIN 25295.00

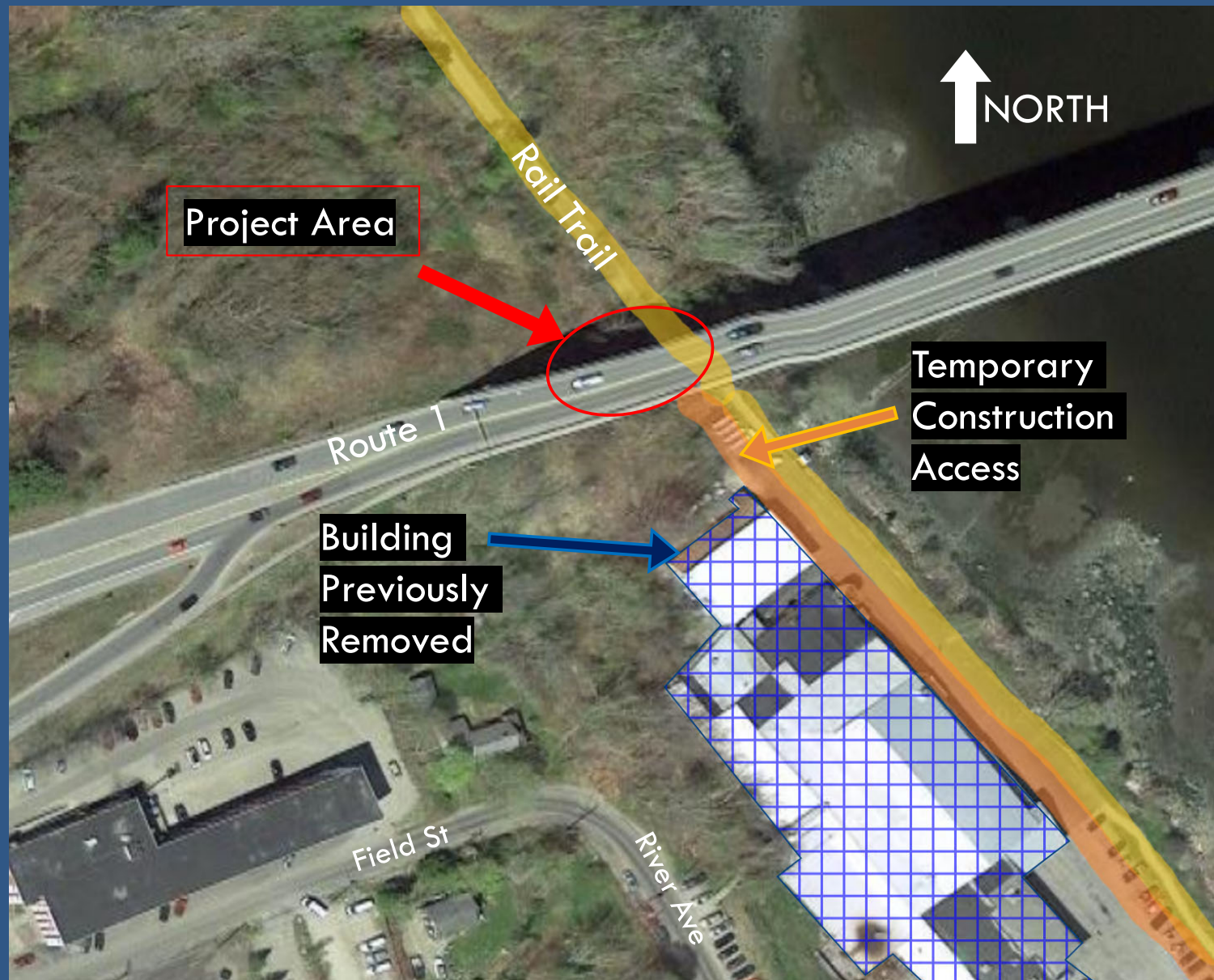
LOCATION

- US Route 1 in Belfast
- Bridge spans Passagassawakeag River
- Work on West side of River
- Belfast Rail Trail within Work Area



Graphic Source - Google Maps

LOCATION



Graphic Source - Google Maps

EXISTING CONDITIONS

Year Built: 1963

Deck Was Replaced In: 2000

Bearings Tipped at Pier 1

Erosion of the Slopes in Front of Abutment 1



Pier 1 – Rotated Bearing



Abutment 1 – Slope Erosion

PROJECT GOALS/CONSIDERATIONS

Restore Failed Slope
By:

- Regrading Slope
- Placement of RipRap Slope Protection
- Placement of RipRap Downspout for Drainage

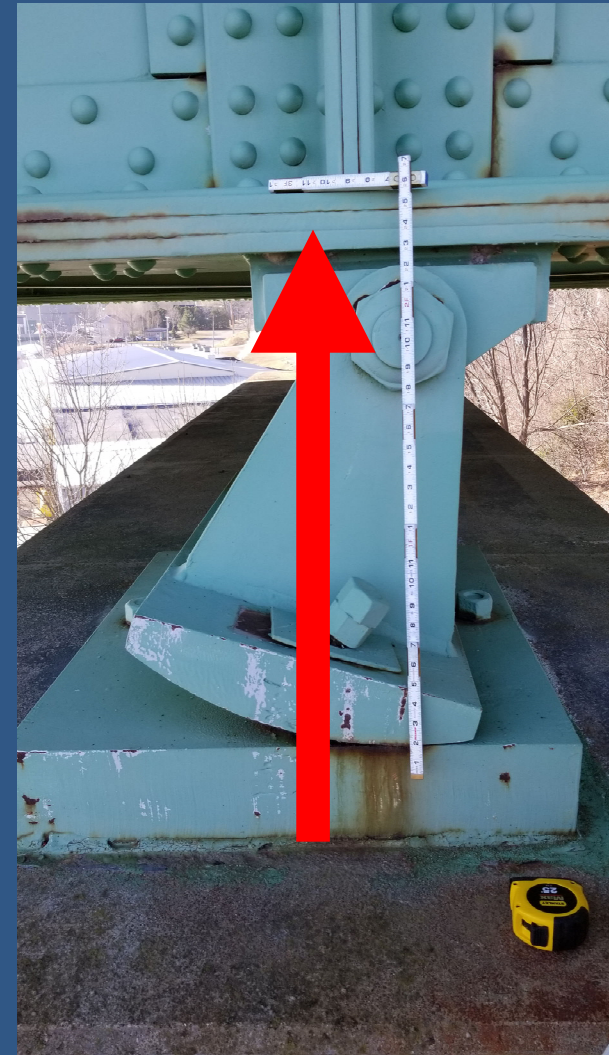


PROJECT GOALS/CONSIDERATIONS

Jack Superstructure Up

Reset and Refurbish Bearings

Reset Superstructure



MAINTENANCE OF TRAFFIC

Pier 1 is Adjacent to the Rail Trail

- During Active Construction, Rail Trail (under bridge) will be Closed to Pedestrian Traffic. North Entrance/Upper Bridge Station to remain open.
- Prior Notice for Any Proposed Closures Will Be Communicated with the City of Belfast
- No closures on Holidays
- Jacking Procedures are Proposed to be Completed with Controlled Traffic During Overnight Hours



Graphic Source - Google Maps

SCHEDULE

Summer 2024 – Final Design

Late 2024 – Advertise

May-October 2025 – Construction Begins
(Contractors Option)

6 Weeks From Start of Construction to Completion

CONTACT ME

Travis Hamel, PE

Area Construction Engineer

Travis.w.Hamel@maine.gov

207-215-7312