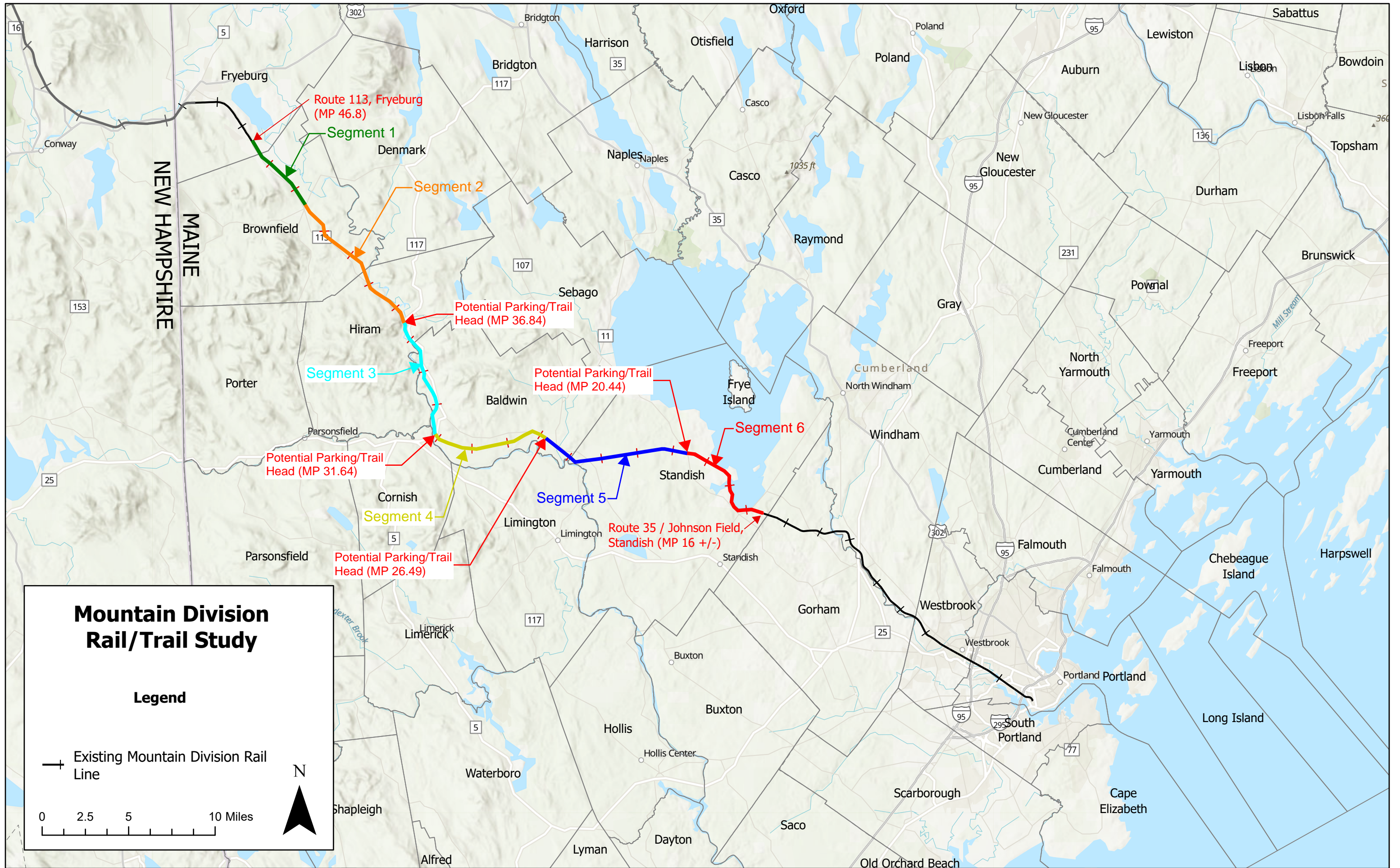


APPENDIX C:  
TRAIL HEAD LOCATIONS



# Mountain Division Rail/Trail Study

## Legend

— Existing Mountain Division Rail Line

0 2.5 5 10 Miles



Route 113, Fryeburg (MP 46.8)

Segment 1

Segment 2

Potential Parking/Trail Head (MP 36.84)

Segment 3

Potential Parking/Trail Head (MP 20.44)

Segment 6

Potential Parking/Trail Head (MP 31.64)

Segment 5

Segment 4

Potential Parking/Trail Head (MP 26.49)

Route 35 / Johnson Field, Standish (MP 16 +/-)

NEW HAMPSHIRE  
MAINE



STATE OF MAINE  
DEPARTMENT OF TRANSPORTATION  
02685800  
WIN 026858.00  
HIGHWAY PLANS

PROJ. MANAGER	BY	DATE
CHECKED/REVIEWED		04/2024
DESIGN/DETAILS		04/2024
REVISIONS 1		
REVISIONS 2		
REVISIONS 3		
REVISIONS 4		
FIELD CHANGES		
	SIGNATURE	
	P.E. NUMBER	
	DATE	

MOUNTAIN DIVISION  
SHARED USE PATH  
MM 36.84 CROSSING

SHEET NUMBER  
**1**  
OF 4





SHEET NUMBER

2

OF 4

MOUNTAIN DIVISION  
SHARED USE PATH

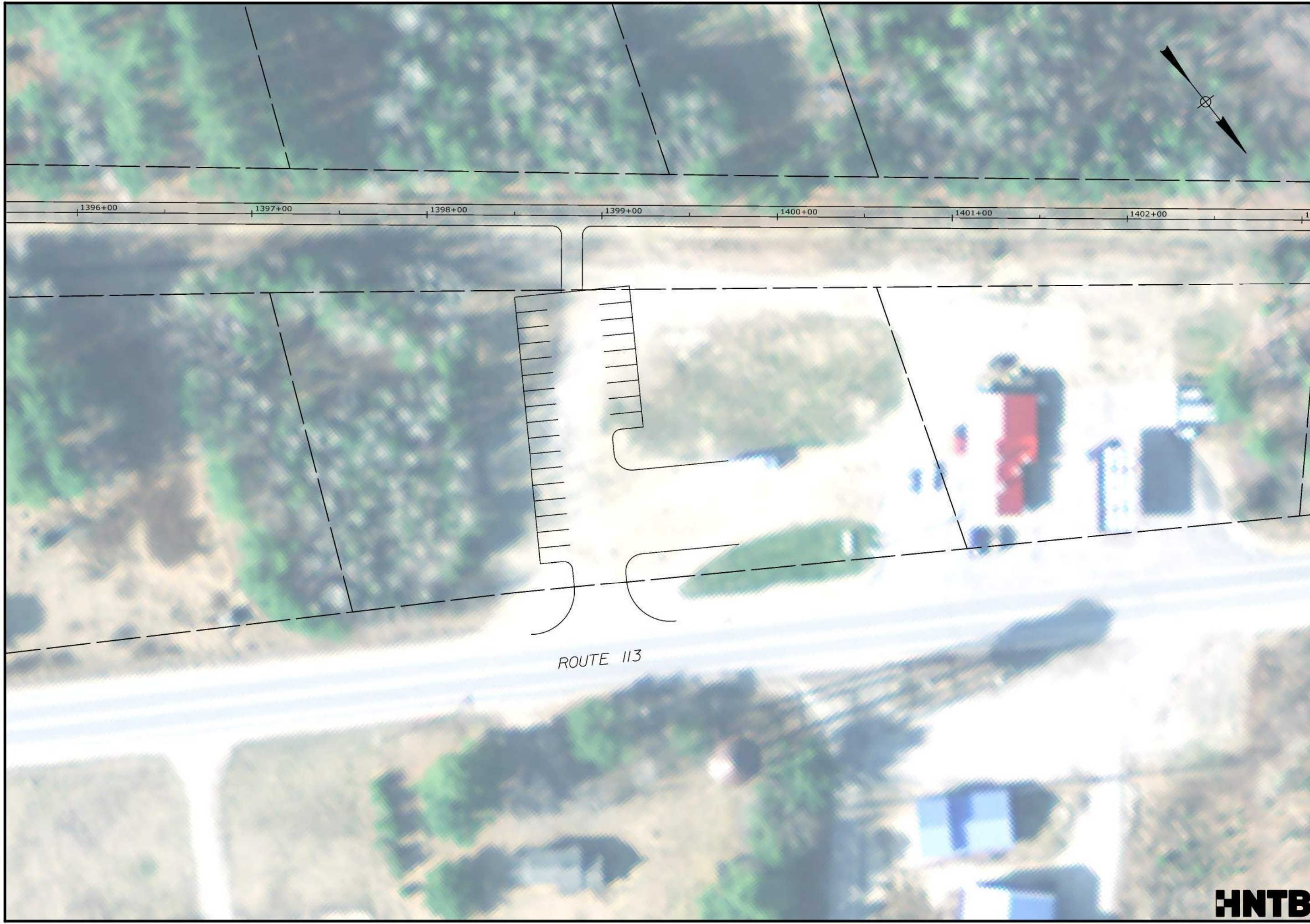
MM 31.64 CROSSING

PROJ. MANAGER	BY	DATE
CHECKED-REVIEWED		04/20/24
DESIGN-REVIEWED		04/20/24
DESIGN-DETAILS		
REVISIONS 1		
REVISIONS 2		
REVISIONS 3		
REVISIONS 4		
FIELD CHANGES		

SIGNATURE	DATE
P.E. NUMBER	

STATE OF MAINE  
DEPARTMENT OF TRANSPORTATION  
02685800  
WIN  
026858.00  
HIGHWAY PLANS





STATE OF MAINE  
DEPARTMENT OF TRANSPORTATION  
02685800  
WIN 026858.00  
HIGHWAY PLANS

PROJ. MGR.	BY	DATE
DESIGN DETAILED		04/2024
CHECKED-REVIEWED		04/2024
DESIGN DETAILED		
DESIGN DETAILED		
REVISION 1		
REVISION 2		
REVISION 3		
REVISION 4		
FIELD CHANGES		

MOUNTAIN DIVISION  
SHARED USE PATH  
MM 26.49 CROSSING

SHEET NUMBER  
**3**  
OF 4



Date: 5/31/2024

Username:

Division:

Filename: Trail\_Heads.dgn



STATE OF MAINE  
DEPARTMENT OF TRANSPORTATION  
02685800  
WIN 026858.00  
HIGHWAY PLANS

PROJ. MANAGER	BY	DATE
CHECKED-REVIEWED		04/2024
DESIGN-DETAILS		04/2024
DESIGN-DETAILS		
REVISIONS 1		
REVISIONS 2		
REVISIONS 3		
REVISIONS 4		
FIELD CHANGES		

SIGNATURE	DATE
P.E. NUMBER	

MOUNTAIN DIVISION  
SHARED USE PATH  
MM 20.44 CROSSING

SHEET NUMBER  
4  
OF 4

