



**Trevor Gleason**  
*MaineDOT Project Manager*

**Kristopher F. Reed, M.S., E.I. (ME)**  
*MaineDOT Designer*

Work Identification Number (WIN):  
**28406.00**

**WIN 028406.00  
SPURWINK BRIDGE –  
CAPE ELIZABETH/SCARBOROUGH, ME  
BRIDGE #2796**



# PROJECT LOCATION

## CAPE ELIZABETH/ SCARBOROUGH, MAINE



# PROJECT GOALS

## Improve Existing Conditions:

- Replace Bridge Surface — Frequent surface cracking present.
- Repair Bridge Drains — Rusting/erosion damage.
- Repair Bridge Foundation — Foundation has erosion damage.

## Minimize Impacts to:

- Traveling vehicles and pedestrians (Route 77 to Crescent Beach State Park)
- Environmental resources (Rachel Carson National Wildlife Refuge)

## Identify a Cost-Effective Solution



# EXISTING CONDITIONS – ROADWAY INFORMATION

## Traffic Data:

- Average Annual Daily Traffic (2022): 4800 vehicles per day
- Posted Speed Limit: 35 MPH



West Approach View

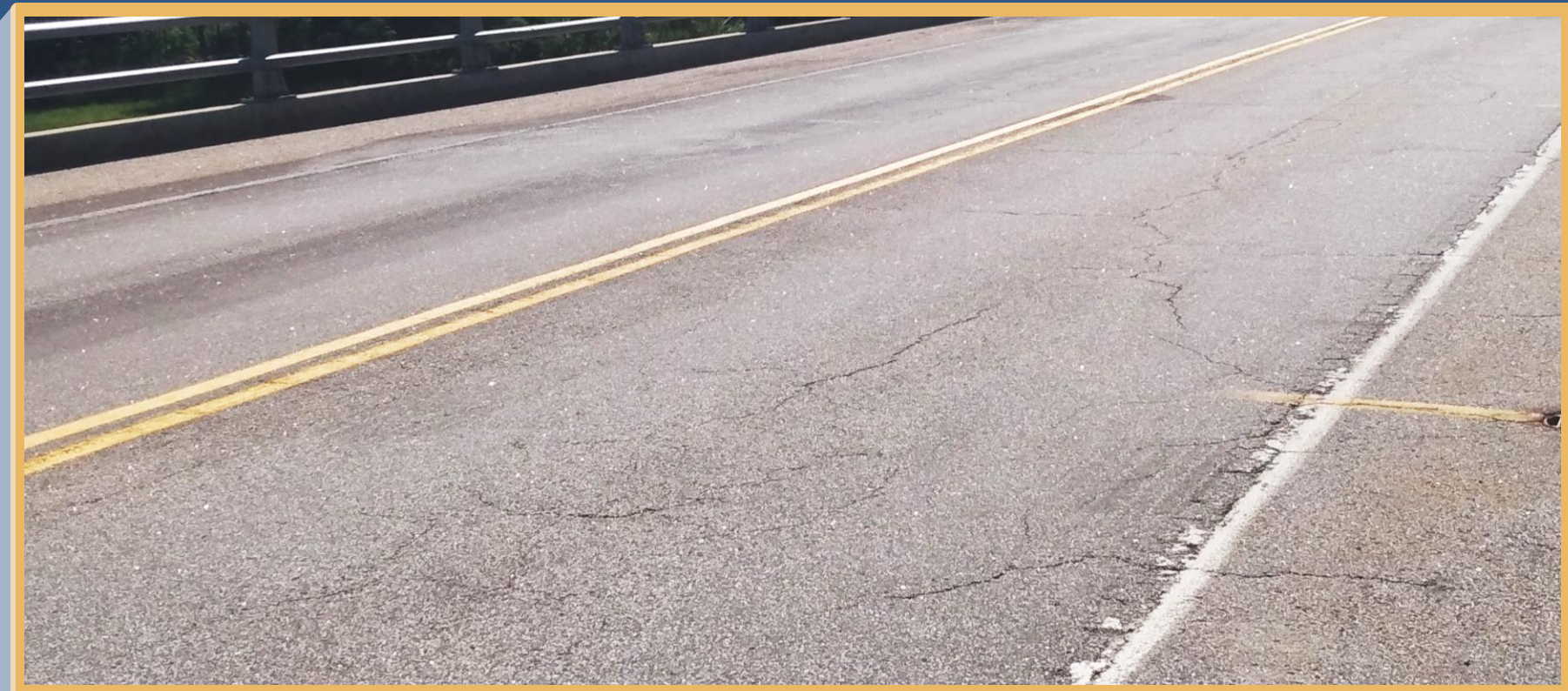


# EXISTING CONDITIONS – BRIDGE SURFACE CRACKS

Bridge Condition – Frequent surface cracking present.



East View





# EXISTING CONDITIONS – DRAIN DAMAGE

Bridge Condition – Drains rust/erosion damage.



Drain Gate  
(Erosion Present)



Drain Downspout  
(Rust Present)



# EXISTING CONDITIONS – FOUNDATION DAMAGE

Bridge Foundation Condition – Erosion damage.



North Foundation



Aerial Bridge View



South Foundation



# PROPOSED WORK

## New Pavement/Drain Repair



East View

Plug  
Drains

Filled with  
Stone (Riprap)

New West  
Drain

## Foundation Repair



North Foundation

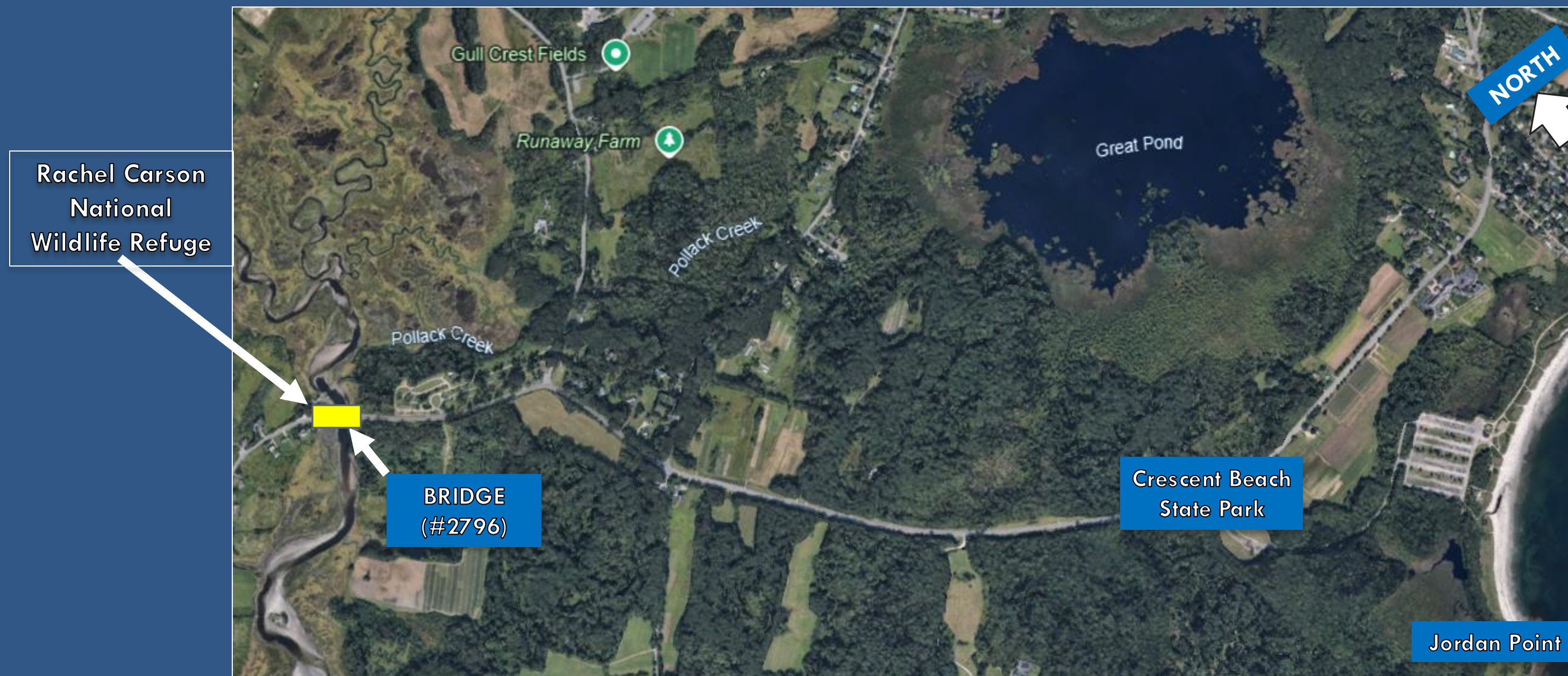


South Foundation



# MAINTENANCE OF TRAFFIC:

- Staged Construction
  - Recommended and Proposed Alternative





# MAINTENANCE OF TRAFFIC:

## Staged Construction:

- Temporarily close one road section at a time during construction.
- Maintain alternating one-way traffic using temporary traffic signals.



## Work Window: Early Fall

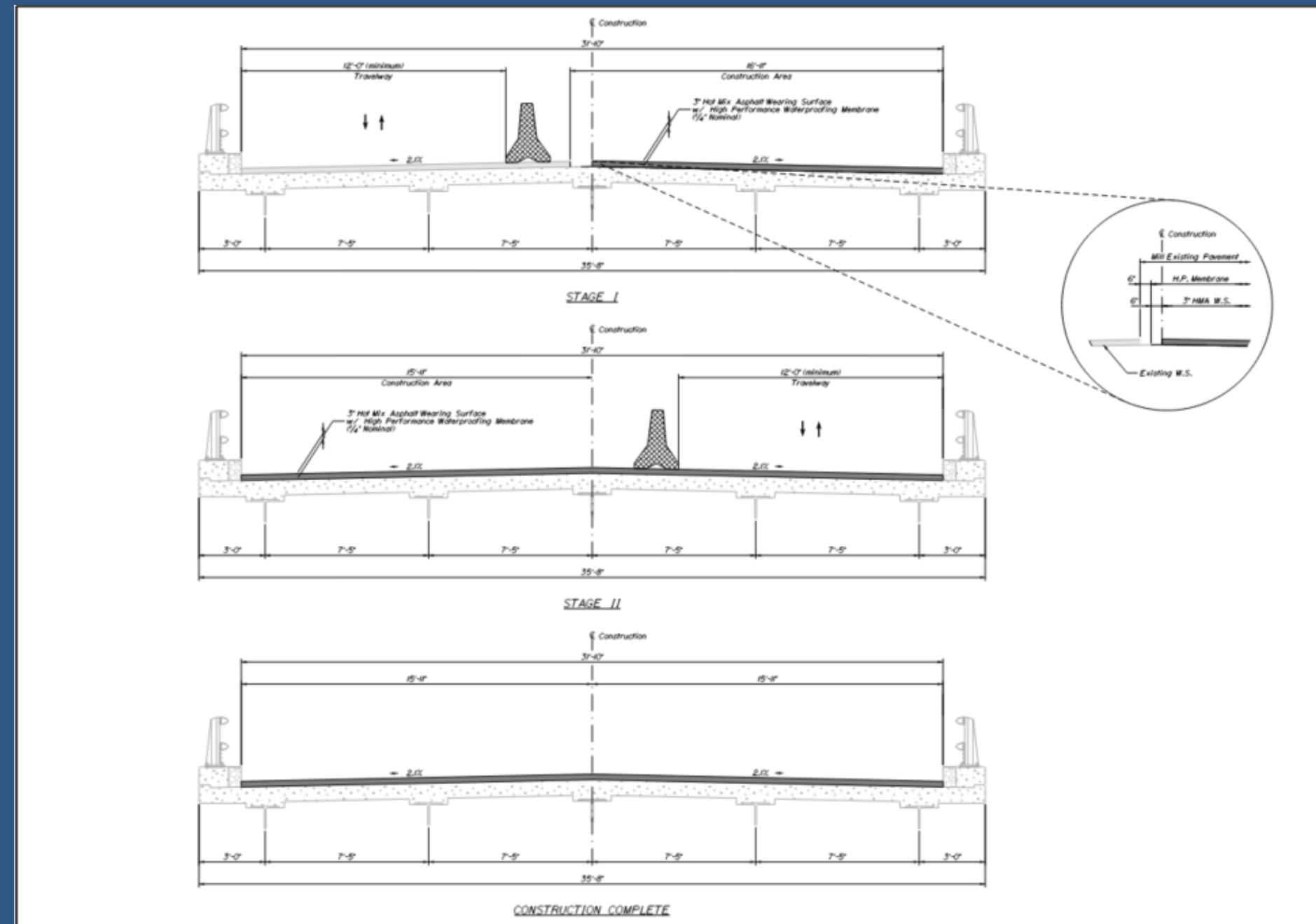
- Reduces seasonal traffic from Crescent Beach State Park.
- Avoids local endangered species nesting season.



# MAINTENANCE OF TRAFFIC PLANS:

## Staged Construction:

- Example from a staged construction wearing surface replacement project in Brunswick, ME.





# NEXT STEPS

## Completion preliminary design

- Conceptualize potential design solutions
- Preliminary public meeting
- Develop concept designs considering public input
- Evaluate the merit of each concept design
- Develop preliminary design recommendations
- Formal public hearing ← **WE ARE HERE**
- Completion of final design
- PS&E process to complete project development
- Advertise Project
- Start construction